



# ORTHO SCAN

IMAGING EXCELLENCE



ORTHO SCAN UC

Putting the *mini*  
back in mini c-arm



## EXCELLENCE IN DESIGN

### LARGEST AND MOST DETAILED IMAGES

The "live" image is 28% larger than the competition's largest image

### ADJUSTMENT FREE IMAGING

Adjusts to metal, motion and varying anatomy

### SURGEON DRIVEN DESIGN

Enabling optimal image quality with minimal effort

### INTUITIVE AND EASY TO USE

The custom keyboard allows single key access to most functions

### SMALL AND LIGHTWEIGHT

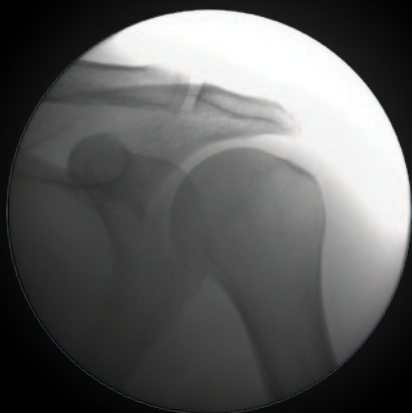
Half the size and one third lighter than the competition

### LASER AIMING DEVICE

Extended duration of our single-crosshair laser increases accuracy

# EXCELLENCE IN IMAGING

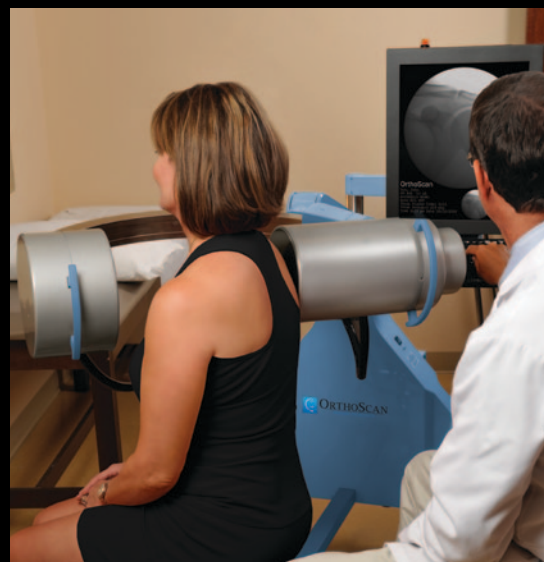
Actual system images



# EXCELLENCE IN CLINICAL DIAGNOSTICS

Benefits of a mini c-arm in the office

- Reduces radiology wait times
- Improves injection accuracy
- Increases procedure capabilities
- Provides motion study capability
- More accurate diagnostic tool
- Established reimbursement codes\*



\*Before treating patients, contact your local payors for policies, procedures, codes and reimbursement.

## EXCELLENCE IN SERVICE |



The OrthoScan service team understands the urgency of fluoroscopy in the surgical and office environment. We support your commitment to exceptional patient care through reliable equipment, timely response and maximizing your uptime.

Design features include solid state image acquisition hardware for dependability and modular components for ease of service. We continue to focus on your invaluable feedback and satisfaction in our mini c-arm.

### Services Offered

- 48 hour service guarantee
- Loaners available, if needed
- Bio Med training available at no charge
- Preventative maintenance contracts
- Extended warranty service contracts

## EXCELLENCE IN COMMUNICATION & DOCUMENTATION |

### PRODUCT OPTIONS

- Larger monitor: 21.3" flat panel
- Digital video recorder: Records 90 minutes at full resolution and 30 fps
- Infrared multi-function footswitch: Customizable for fluoro, print and/or save
- Two printer options: Sony 3.5" x 3.5" (thermal paper), Sony 5" x 7" (blue film or thermal paper)

### COMMUNICATION & DOCUMENTATION

- EMR image link: Enables EMR connectivity
- USB memory stick
- DVI/VGA video out
- DICOM 3.0 compliant: Send, store, print modality worklist
- Internal image storage
- Wireless communication

